

# Agriculture fleet management



## Cultivate efficiency – harvest results.

Modernize your farm with advanced fleet management. Optimize operations, reduce costs, and improve safety with technology designed for the agriculture industry.

### The Geotab and Intelliculture Advantage

Geotab and IntelliCulture give your farm a digital edge. Boost efficiency and slash costs with real-time tracking for your entire fleet – from tractors to road vehicles. Optimize routes, reduce fuel consumption, proactively maintain equipment and make data-driven decisions for a more profitable operation.

IntelliCulture's precision agriculture platform seamlessly integrates with Geotab's fleet management system, providing a comprehensive solution for managing your farm's operations. Track your vehicles, monitor field tasks, optimize spraying and harvesting and analyze data to make informed decisions that improve yields and profitability.

"The mapping is useful to show where our orchard tractors have sprayed and be able to see if a block was missed, we use daily reports to see where equipment has been and weekly reports to keep us on top of our oil changes and let us know about check engine errors."

– **Dave Petheram** -  
**Senior Operations**  
**Technology Manager**



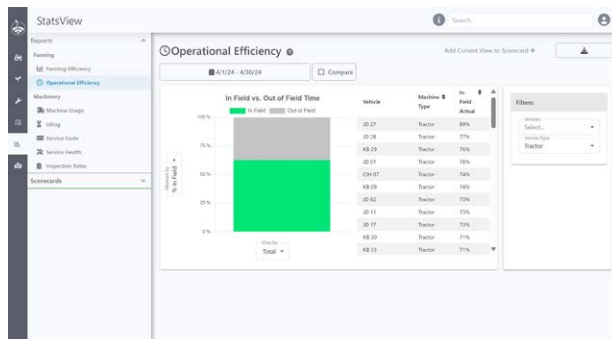
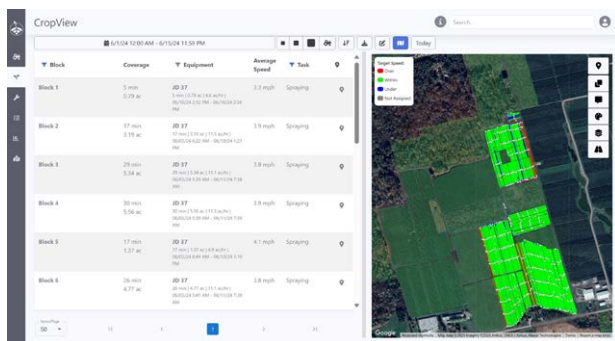
### Eyes on your entire operation

Know where your assets are at all times. Track everything from tractors to trailers in real-time for improved security and efficiency.



### Keep your equipment running strong

Prevent breakdowns and extend equipment life using Geotab to get automated maintenance reminders and engine diagnostics, and IntelliCulture's platform for tracking equipment usage and scheduling your maintenance effortlessly.



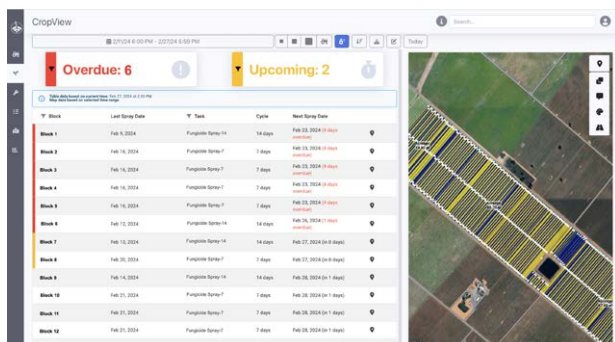
### Fieldwork that works smarter

Optimize fieldwork by enabling intelligent routing for planting, harvesting and transport, alongside IntelliCulture's spray metrics and efficiency insights to maximize yields and minimize costs.



### Unlock the power of your data

Geotab and IntelliCulture enable informed decisions and boost your bottom line by combining Geotab's fleet data with IntelliCulture's precision agriculture data for a holistic view of farm operations, including detailed block-level cost accounting.



### Built tough for the farm

Take advantage of the GO9 Rugged, the durable tracking device that can handle the harshest conditions on your farm, from rain to dirt to snow. The GO9 RUGGED can be installed on any OEM, old or new, in a couple of easy steps.



### Fuel efficiency, down to the drop

Geotab and IntelliCulture reduce fuel costs and your carbon footprint by monitoring fuel usage, improving driver behavior and optimizing equipment utilization with IntelliCulture's field mapping and analysis.



### Cultivate better drivers

Improve driver performance, reduce wear and tear, and enhance safety. Monitor speeding, harsh braking and other risky behaviors

Want to learn more about Geotab and IntelliCulture?

Visit the [website here](#) to transform your agriculture fleet today, with help from Geotab and IntelliCulture.