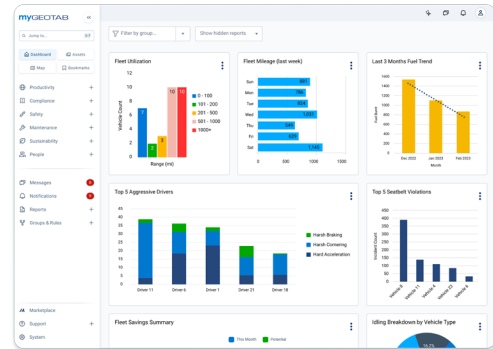
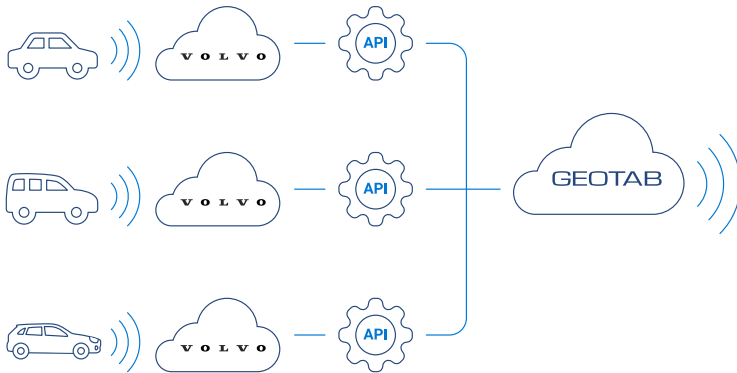


One integrated platform for connected and sustainable fleet performance



Geotab integrated solution for Volvo Cars: Elevate fleet management by harnessing insights for enhanced visibility and business efficiency

With OEM-installed telematics for Volvo Cars, view high-quality data insights to help monitor vehicle performance, vehicle status and more with no aftermarket hardware required. Get centralized access to the connected vehicle data via the MyGeotab platform and the power to analyze performance for business decisions. Data points include GPS tracking, engine metrics and warning indicators as well as for insights on vehicle location, fuel consumption, maintenance and more.



One unified platform

Key benefits:



Integrated fleet management

Upon request, vehicle data from Volvo Cars are funneled to MyGeotab platform for actionable insights on one integrated platform.



Powerful fleet management tools

Get activity reports, maintenance alerts, energy utilization information and other fleet metrics – for better performance and fleet productivity.



Access to data insights based on your needs

Access broader vehicle data insights based on the feature-rich rate plan.



Cost advantage and remote activation

No additional hardware or installation expenses, helping save time and money.



Maximize vehicle uptime

OEM-installed telematics units on Volvo Cars and integration of MyGeotab's seamless fleet management features, helps passenger vehicles operate at their peak utilization rate.

Contact us to learn more:

Email: OEMLD@geotab.com | Toll-free: +1 (877) 436-8221





Productivity

- Monitor timely arrival & departure of assets
- Inventory management using zones
- Monitor vehicle health using warning data
- Vehicle utilization in the context of shared mobility (open/close status of door, window, hood, trunk and fuel lid)



Operations

- Monitor utilization of the vehicle based on trip distance (odometer)
- Setup maintenance reminders (distance and time to maintenance)
- Plan maintenance windows using available warnings (engine service warning, brake fluid, engine oil level, engine coolant level, low tire pressure)
- Manage distance & time to maintenance
- Monitor distance to empty across different vehicles (ICE, EVs)



Safety

- Analyze asset safety using status information for central locking, door, window, hood, trunk and fuel lid



Sustainability

- Monitor fuel level and state of charge %
- Monitor charging status of vehicle and time remaining to charge



Compliance

- Driver logbook to distinguish business vs personal trips
- Corporate Sustainability Reporting Directive



Expandability

- Access software development kit (SDK) and APIs to develop custom applications suited to your business
- Marketplace solutions



V O L V O

The power of Geotab's telematics technology – along with Volvo Cars – equips fleets with a turnkey connectivity solution that helps maximize productivity and reduces downtime. Collect and monitor rich, high-quality data from Volvo Car's range of models, all with end-to-end data protection. With ready-to-go factory-installed telematics and an integrated MyGeotab fleet management platform, reaching a new level of connectivity couldn't be easier.

¹ The Geotab Integrated Solution for Volvo Cars is available in the United States of America, Canada, and the following European Countries; Austria, Belgium, Bulgaria, Croatia, Cyprus, Czech Republic, Denmark, Estonia, Finland, France, Germany, Greece, Hungary, Ireland, Iceland, Italy, Latvia, Liechtenstein, Lithuania, Luxembourg, Malta, Netherlands, Norway, Poland, Portugal, Romania, Slovakia, Slovenia, Spain, Sweden, Switzerland, United Kingdom.